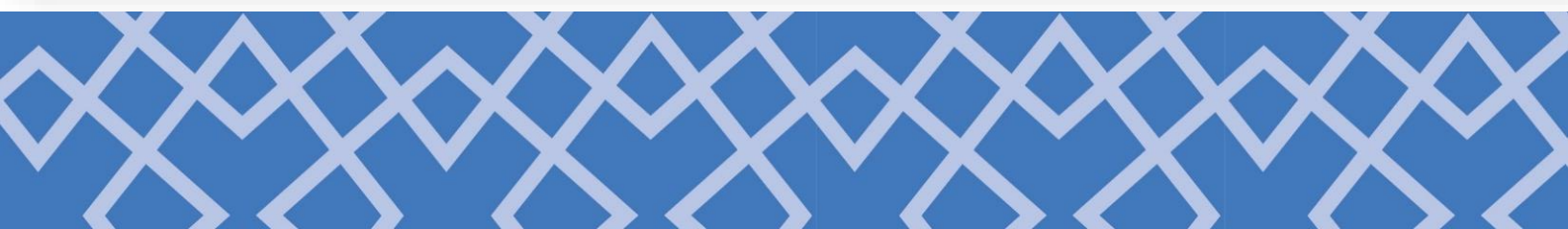




NSRCC BUNGALOW COMPENDIUM



Directory

Introduction

[Essential Contact Numbers](#)

[Bungalow News](#) **Update!**

[Bungalow Information](#)

[Bungalow Layout Map](#)

Bungalow Booking

[Booking Terms And Conditions](#)

[How to make a booking](#)

[Rental Rates](#)

[Bungalow Check-In, Check-Out Procedure](#)

[Bungalow Self Inventory Check List](#)

[Bungalow Inventory – Chargeable Items](#)

[Rental of BBQ Miscellaneous Items](#)

Bungalow House Rules

[Bungalow House rules](#)

NSRCC Facilities

[Recreation Facilities](#)

[Sport Facilities](#)

[Dining Facilities](#)

[Sea Sports Centre](#)

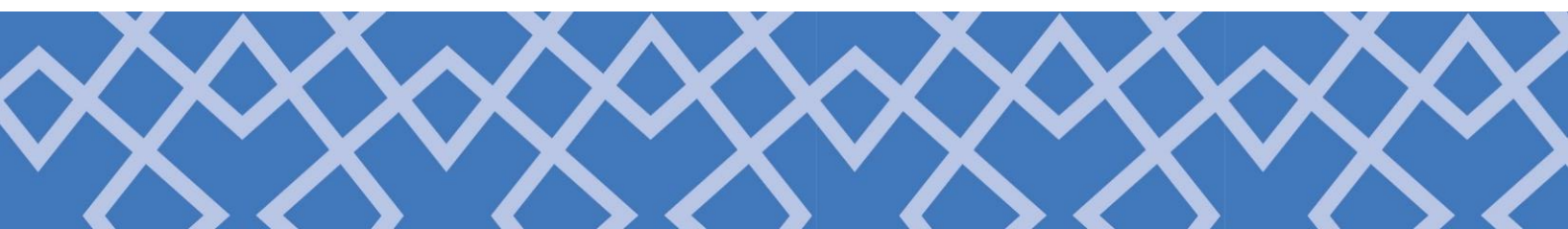
NSRCC Club Magazine

[Resort View](#)

Contact Us

[Bus Schedule](#)

[NSRCC Facilities Directory](#)



Essential Contact Numbers

Bungalow Reception

Opening Hours: 9am to 5.30pm daily

Booking Hours: 9am to 5.00pm daily

6542 2036

**6543 5702 / 5703 /
5704**

Bungalow Housekeeping Services

8.00am to 10.00pm daily

6543 5705 / 5706

Main Lobby Reception

8.00am to 8.00pm daily

6543 5725

6542 8288

Bungalow Telephone

XX will be your bungalow unit number

6540 85XX

Local Calls

Dial '9' followed by the external number

9 XXXX XXXX

Duty Manager

Available 24 hours a day

**Please call when there is an emergency*

9637 4258

Security Guardhouse

Security Officers are on duty 24 hours a day

**Please call when there is an emergency*

6540 8598 / 8599

Enquiry / Emergency

Location of AED Set

- Main Clubhouse Lobby Reception
- Security Guardhouse
- Lifeguard Office @ Swimming Pool

[Back to Directory ^](#)

Bungalow News **Update !**

1. Bungalow Kitchenette

Induction cooker with Steamboat pot will be removed from the bungalow amenities provided with effect from **April 2024***

2. Rental of Induction Cooker

The induction cooker with Steamboat pot is available for rent from **April 2024***
To view Rental list, please click [here](#)

Bungalow Information



Amenities

- 2 cosy bedrooms (twin & double-sharing)
- 2 shower bathrooms equipped with bath & hand towels, toiletries and hair dryer
- Cable TV with a wide selection of channels
- A fully-equipped kitchen that comes with refrigerator, freezer, induction cooker & microwave oven
- Exclusive use of private barbeque pit
- Fully air-conditioned unit
- Wi-Fi access

Housekeeping Services

Clean sanitised linen is available for replacement upon request. For security purposes, linen replacement is conducted only in the presence of occupants unless prior consent is given.

[Next >](#)



Laundry

Kindly dry your clothes on the retractable clothes hanger provided at the bungalow veranda.

Occupancy

Gathering of not more than 20 persons are allowed in each bungalow. A maximum of 8 persons are permitted to stay overnight in each bungalow (Including children below the age of 12).

6543 5702 / 5703 /
5704

Shuttle Service

[\(Please refer to the NSRCC Shuttle Service schedule\)](#)

For more information on our shuttle service to Tanah Merah MRT station, please contact Bungalow Reception or Main Lobby Reception.

6542 8288
6543 5725

Guest Passes

Please keep your Guest Pass with you during your stay. Your identity card should be presented with the pass for booking and entry to club facilities. Please contact Bungalow Reception for assistance.

6543 5702 / 5703 /
5704

Carpark (Bungalow Compound)

Choice of parking is on a first-come, first-served basis on **yellow** lots only (**red** lots are reserved for corporate bungalows).

6540 8598 /
8599

[Back to Directory ^](#)

Bungalow Layout Map

NSRCC Bungalow Units Directory



Bungalows Away from Swimming Pool: 1 to 34

Bungalows Near Swimming Pool: 35 to 40

Corporate Bungalows: 1, 2, 3, 4, 5, 7, 8, 12, 14, 15, 16, 17, 23 & 29
(Not open to Members or public for booking)

For booking enquiries, please call 6542 2036 / email
bungalows@nsrcc.com.sg or send a WhatsApp message
9833 9141.

Or walk-in to Bungalow Reception between 9.00am to 5.00pm.



Nsrcc Bungalows
WhatsApp contact

[Back to Directory ^](#)

Booking Terms and Conditions

1. Rental Fee And Deposit

- The requirement for booking is a minimum of two (2) nights.
- All payment can be made in Singapore currency by NETS or credit card.
- For any 'No Show' on check-in date, full bungalow rental fees will be charged to member's monthly statement of account. Non- members will not receive refund of rental fees which have been pre-paid.
- The resort reserves the right to vary the rental and deposit rates at any time it deems fit.

2. Amendment Of Booking

- Amendment of booking can be made provided adequate notice is given. Minimum notice period to be given are as follows:
 - at least 14 days of notice before arrival date (For peak/super-peak/super holiday periods)
 - at least 7 days notice before arrival date (For off-peak period)
- 10% administrative charge based on the previous booking rate applies for any amendment.
- If advise of amendment is not received within the specified time as stated, the amendment shall be treated as a last minute cancellation, and shall be subjected to conditions stated under 'Cancellations'.
- Applicants may amend their booking at the Resort Bungalow Reception or through telephone between 9.00am and 5.00pm daily.
- Booking is non-transferable.

3. Cancellation

- Applicants may cancel their bookings at the Resort Bungalow Reception between 9.00am and 5.00pm daily or through telephone.
- Cancellations are subject to the following charges and conditions:

50% of Bungalow Rental Fees

- Notice given 14 days or less prior to arrival date (For peak/super-peak/super holiday periods)
- Notice given 7 days or less prior to arrival date (For off-peak period)

20% of Bungalow Rental Fees

- Notice given more than 14 days prior to arrival date (For peak/super-peak/super holiday periods)
- Notice given more than 7 days prior to arrival date (For off-peak period)

[Back to Directory ^](#)



Bungalow Internet Booking

Booking Period

Advance booking up to **6 months** for NSRCC members and **5 months** for non - members is allowed.

How to Book? (Nsrcc Members)

1. Click [here](#)
2. Select dates required
 - Dates shown in 7 days format
 - Click to proceed to go to confirmation screen
4. Click on confirm after reading agreement to T&C.
5. Key in contactable phone number and valid email address.
6. Click confirm and a confirmation email will be sent to address provided.
7. Payment upon check out

How to Book? (Non Members)

1. Create an account. Click [here](#)
2. Login as Non-member for Online booking.
3. Select dates required
 - Dates shown in 7 days format
 - Click to proceed to go to payment screen
4. Click on confirm after reading agreement to T&C.
5. Key in Credit card details to submit full payment.
6. Click next.
7. Once payment approved, a confirmation email will be sent to address provided.

For booking enquiries, please call 6542 2036 / email bungalows@nsrcc.com.sg or send a WhatsApp message 9833 9141

Applicants may also make their bookings at the Resort's Bungalow Reception between 9.00am to 5.00pm daily.

Rental Rates

All prices quoted below are inclusive of 9% GST:

Rental Fees Per Night Per Bungalow for Bungalows Away from Poolside (Bungalow numbers 1 to 34 excluding corporate units)				
<i>Categories</i>	<i>OFF PEAK</i>	<i>PEAK</i>	<i>SUPER PEAK</i>	<i>SUPER HOLIDAY</i>
Members	\$136.25	\$261.60	\$308.47	\$330.27
SAFRA Members	\$168.95	\$419.65	\$466.52	\$488.32
NS Men	\$184.21	\$466.52	\$513.39	\$535.19
Citizens	\$252.88	\$495.95	\$535.19	\$556.99
Non-Citizens	\$331.36	\$535.19	\$561.35	\$583.15
Rental Fees Per Night Per Bungalow for Bungalows Near Swimming Pool (Bungalow numbers 35 to 40 excluding corporate units)				
<i>Categories</i>	<i>OFF PEAK</i>	<i>PEAK</i>	<i>SUPER PEAK</i>	<i>SUPER HOLIDAY</i>
NSRCC Members	\$158.05	\$283.40	\$330.27	\$352.07
SAFRA Members	\$190.75	\$441.45	\$488.32	\$510.12
NS Men	\$206.01	\$488.32	\$535.19	\$556.99
Citizens	\$274.68	\$517.75	\$556.99	\$578.79
Non-Citizens	\$353.16	\$556.99	\$583.15	\$604.95

*Off-Peak Period: Monday to Thursday

*Peak Period: Fri to Sun (including eve of public holidays & public holidays)

*Super Peak Period: School holidays

*Super Holiday: Eve of & Day of New Year, Chinese New Year and Christmas

View Room Availabilities of the bungalows, click [here](#)

[Back to Directory ^](#)

Bungalow Check-In, Check-Out Procedure

Upon Check-In (2.00pm to 5.00pm)

1. Occupants are advised to do a self inventory check upon check-in.
2. Please report any discrepancies or damages to the Customer Service Officer at Bungalow Reception within 2 hours upon check in. Otherwise all items shall be deemed as accounted for and in good condition. Charges apply for lost/damaged items.

Upon Check-Out (9.00am to 10.00am)

1. Please call Housekeeping (Tel 6543 5705/5706) by 10.00am for inventory check.
2. Once inventory check is completed, proceed to Bungalow Reception for check-out with this list and the 2 keycards.
3. We seek your co-operation to keep the unit clean, tidy and organized.
4. Please ensure the bungalow unit is handed over in a generally clean condition upon check-out. An additional cleaning fee of S\$100 will be levied for excessive spillage, litter and personal bulky items discarded inside the unit.
5. Occupants will be billed for items that are identified as damaged or lost during check-out. The replacement or repair cost will be advised and payment will be deducted from their deposit upon check-out.

Bungalow Self Inventory Check List

The following items are provided for your convenience. Please ensure all items are accounted for and in good condition. **Charges apply for lost or damaged items.**

*** With effect from 1st April 2024, Induction cooker with Steamboat pot will no longer be provided. It is available for rent at \$10.00 per stay.**

S/NO	LIVING & DINING ROOM	Quantity
1	Mahjong Table / Umbrella / Telephone	1 pc each
2	55"/60" LED TV & Remote Control	1 set
3	L-shape 3 Seater Sofa	1 set
4	Throw Cushion	2 pcs
5	Coffee Table / Stand Fan / Wall Clock / Aircon remote control	1 pc each
6	Artificial Plant - Floor Standing & Coffee Table	1 pc each
7	Dining Table / 6 Chairs	1 set
KITCHENETTE		Quantity
8	Water Decanter / New Sponge & Dish Cloth / Dish Drainer	1 set
9	2-Door Refrigerator	1 pc
10	Chest Freezer	1 pc
11	Electric kettle	1 pc
12	Induction Cooker / Steamboat Pot / Ladle	1 set
13	Microwave Oven with Casserole Dish	1 set
14	Wall-mounted Painting on 2nd floor	1 pc
EACH BEDROOM		Quantity
15	Single Bed Set c/w Pillow, Duvet & Bed Runner	2 sets
16	Dressing Stool	1 pc
17	Bedside Table / Telephone / Alarm Clock	1 pc each
18	Hairdryer / Aircon Remote Control	1 pc each
19	32" LED TV c/w Digital Antenna & Remote Control	1 set
EACH WASHROOM		Quantity
20	Bath Mat	1 pc
21	Bath / Hand Towel	2 pcs each
22	Soap Dish / Amenity Tray / Tumbler (2)	1 set
23	Laundry Basket	1 no

Updated as at 20/02/2024

[Back to Directory ^](#)

Bungalow Inventory – Chargeable Items

The following items are provided for your convenience.

Please ensure all items are accounted for and in good condition.

Charges apply for lost or damaged items.

DESCRIPTION	Quantity	Cost (Piece)
LIVING & DINING HALL		
Glass Main Door	1	\$1,200.00
Glass Mirror Wall - Entrance	1	\$800.00
Mahjong Table	1	\$85.00
Umbrella	1	\$8.50
Telephone	1	\$25.00
55" Panasonic / 60" Sharp LED TV	1	\$1,100.00
TV Remote Control (Panasonic)	1	\$35.00
TV Remote Control (Sharp)	1	\$85.00
A/Con Remote Control (Daikin)	1	\$98.00
Stand Fan	1	\$105.00
Wall Clock	1	\$35.00
Coffee Table	1	\$580.00
Coffee Table Lamination	5 Sides	\$200.00
L-Sharp Sofa Frame Slip Cover	1	\$800.00
L-Sharp Sofa Cover	6	\$150.00
Throw Cushion	2	\$35.00
Snacks Basket	1	\$10.00
Artificial Plant (Floor Standing)	1	\$200.00
Artificial Plant (Coffee Table)	1	\$40.00
Hall Curtain	6	\$200.00
Dining Curtain	2	\$200.00
Glass Top – Coffee Table	1	\$200.00
Glass Top - TV Console	1	\$150.00
Glass Top – Dining Table	1	\$250.00
Dining Chair - PVC Upholstery Arm Rest	12 Arm Rests	\$120.00
Dining Chair - PVC Upholstery Seat	6 Seats	\$180.00
Dining Chair - PVC Upholstery Back Rest	6 Back Rests	\$180.00
Glass Sliding Doors / Panels	13	\$1,200.00

[Next >](#)

Bungalow Inventory – Chargeable Items

Please ensure all items are accounted for and in good condition.

Charges apply for lost or damaged items.

DESCRIPTION	Quantity	Cost (Piece)
KITCHEN		
Water Decanter	1	\$2.80
Dish Drainer	1	\$10.00
2-Door Refrigerator	1	\$580.00
Chest Freezer	1	\$330.00
Electric Kettle	1	\$59.00
Induction Cooker	1	\$65.00
Steamboat Pot	1	\$30.00
Microwave Oven	1	\$107.00
Casserole Dish	1	\$26.00
25L Pedal Rubbish Bin	1	\$37.00

CUTLERY		
Spoon	4	\$0.80
Fork	4	\$0.80
Teaspoon	4	\$0.70
Butter Knife	1	\$0.80
Fruit Knife	1	\$1.50
Wooden Turner	1	\$2.00
Wine Opener	1	\$4.80
Can Opener	1	\$2.80
Chopsticks	8	\$0.15
Ladle	1	\$2.00
Ladle w/ Holes	1	\$2.00
Porcelain Mug	4	\$1.50
Porcelain Plate	4	\$4.50
Porcelain Bowl	4	\$4.80
Stainless Steel Utility Bowl	4	\$15.00
Chopping Board	1	\$7.50
16" Tong	1	\$3.00

[< Previous](#)

[Next >](#)

Bungalow Inventory – Chargeable Items

Please ensure all items are accounted for and in good condition.

Charges apply for lost or damaged items.

DESCRIPTION	Quantity	Cost (Piece)
EACH BEDROOM		
Bed Divan	2	\$580.00
Bed Divan - PVC Upholstery	8 Sides	\$300.00
Spring Mattress Single	2	\$200.00
Bed Sheet Single	2	\$9.50
Duvet Cover Single	2	\$30.00
Duvet Insert Single	2	\$28.00
Mattress Protector Single	2	\$11.50
Bed Runner Single	2	\$30.00
Bed Sheet King	1	\$26.00
Duvet Cover King	1	\$45.00
Duvet Insert King	1	\$55.00
Mattress Topper King	1	\$200.00
Mattress Protector King	1	\$35.00
Bed Runner King	1	\$38.00
Pillow	4	\$9.00
Pillow Case	4	\$2.10
Bed Runner King	1	\$38.00
Dressing Mirror	1	\$200.00
Dressing Stool	1	\$77.00
Bedside Table	1	\$450.00
Telephone	1	\$25.00
Alarm Clock	1	\$55.00
Alarm Clock Power Adapter	1	\$15.00
Hair Dryer	1	\$35.00
32" LED TV - Sharp	1	\$280.00
TV Remote Control (Sharp)	1	\$35.00
A/Con Remote Control (Daikin)	1	\$98.00
Bedroom Curtain	4	\$150.00

[< Previous](#)

[Next >](#)

Bungalow Inventory – Chargeable Items

Please ensure all items are accounted for and in good condition.

Charges apply for lost or damaged items.

DESCRIPTION	QUANTITY	COST (Piece)
EACH WASHROOM		
Wall Mirror	1	\$200.00
Sink	1	\$250.00
WC	1	\$250.00
WC Water Storage Tank	1	\$250.00
WC Seat Cover	1	\$80.00
Bath Towel	2	\$8.50
Hand Towel	2	\$2.80
Bath Mat	1	\$5.80
Soap Dish	1	\$4.70
Glass Tumbler	2	\$2.00
Laundry Basket	1	\$8.80

L2 STAIRCASE HALLWAY		
Wall Painting	1	\$90.00
Plaster Wall Pillar	1	\$250.00

BBQ / PATIO		
120L Pedal Bin	2	\$90.00
Retrackable Clothes Hanger	1	\$150.00
Bamboo Chick (B)	5	\$280.00
Bamboo Chick (S)	1	\$175.00
Entrance Floor Mat	1	\$12.00

RENTALS		
Foam Mattress	1	\$45.00
Mattress Cover	1	\$15.00
Thermal Blanket	1	\$15.00
Fibreglass Table	1	\$110.00
PVC Chair	1	\$17.00

Rental of BBQ Miscellaneous Items

The following items are available for your added convenience.

Please call Housekeeping (6543 5705/5706). Last order by 9:30pm.

To minimise physical contact, items issued will remain in the bungalow throughout your stay. There is **NO Early Return Policy**.

All items are on a First Come First Served Basis and subject to availability.

NO.	FOR RENT	MAX QUANTITY	CHARGES
1	Mahjong Tiles + 1 Pc Mahjong Paper	1 set	Complimentary
2	Additional Pillow	2 pc	\$1.50/pc/day
3	Mattress with pillow, blanket and linen	4 set	\$5.00/set/day
4	Set of 1 pvc table and 4 chairs	2 set	\$8.00/set/day
5	1 pvc Table [If not taken as a set in #4]	2 pc	\$5.00/pc/day
6	1 Chair [If not taken as a set in #4]	8 pc	\$1.50/pc/day
7	Iron and Board Set	1 set	\$1.50/set/day
FOR PURCHASE			CHARGES
8	Bag of Charcoal (3kg)		\$6.00/bag
9	Charcoal Set [4 pieces Fire starters, 1 Bag of Charcoal, 1 Lighter]		\$7.00/set
10	Wire Mesh		\$5.00/pc
11	Aluminium Foil		\$3.50/roll
12	BBQ Tong		\$3.00/pc
13	Disposable Paper Plates [50 pieces]		\$5.00/pkt
14	Disposable Paper Cups [50 pieces]		\$5.00/pkt
15	Disposable Plastic Forks [50 pieces]		\$2.00/pkt
16	Disposable Plastic Spoons [50 pieces]		\$2.00/pkt
17	Serviettes [50 pieces]		\$2.00/pkt
18	Mahjong Paper		\$1.00/pc
19	Fire Starters [4 pieces]		\$1.50/box
BUNGALOW COMPOUND PARKING CHARGES [TILL 11AM NEXT DAY]			CHARGES
20	Off-peak - [Monday to Thursday]		\$6.00/day
21	Peak - [Friday to Sunday] [EVE of PH, PH & School Holidays]		\$12.00/day
FOR CORPORATE UNITS ONLY			CHARGES
22	Mahjong Set [inclusive of Table, Mahjong Tiles & 1 Pc Mahjong Paper]		\$10.00/day
23	BBQ PIT		\$12.00/day

[Next >](#)

Rental of BBQ Miscellaneous Items – from 1st April 2024 onwards **Update !**

The following items are available for your added convenience.
Please call Housekeeping (6543 5705/5706). Last order by 9:30pm.

To minimise physical contact, items issued will remain in the bungalow throughout your stay. There is **NO Early Return Policy**.

All items are on a First Come First Served Basis and subject to availability.

NO.	FOR RENT	MAX QUANTITY	CHARGES
1	Mahjong Tiles + 1 Pc Mahjong Paper	1 set	Complimentary
2	Additional Pillow	2 pc	\$1.50/pc/day
3	Mattress with pillow, blanket and linen	4 set	\$5.00/set/day
4	Set of 1 pvc table and 4 chairs	2 set	\$8.00/set/day
5	1 pvc Table [If not taken as a set in #4]	2 pc	\$5.00/pc/day
6	1 Chair [If not taken as a set in #4]	8 pc	\$1.50/pc/day
7	Iron and Board Set	1 set	\$1.50/set/day
8	Induction Cooker / Steamboat Pot / Ladle	1 set	\$10.00/set/stay

	FOR PURCHASE	CHARGES
9	Bag of Charcoal (3kg)	\$6.00/bag
10	Charcoal Set [4 pieces Fire starters, 1 Bag of Charcoal, 1 Lighter]	\$7.00/set
11	Wire Mesh	\$5.00/pc
12	Aluminium Foil	\$3.50/roll
13	BBQ Tong	\$3.00/pc
14	Disposable Paper Plates [50 pieces]	\$5.00/pkt
15	Disposable Paper Cups [50 pieces]	\$5.00/pkt
16	Disposable Plastic Forks [50 pieces]	\$2.00/pkt
17	Disposable Plastic Spoons [50 pieces]	\$2.00/pkt
18	Serviettes [50 pieces]	\$2.00/pkt
19	Mahjong Paper	\$1.00/pc
20	Fire Starters [4 pieces]	\$1.50/box

	BUNGALOW COMPOUND PARKING CHARGES [TILL 11AM NEXT DAY]	CHARGES
21	Off-peak - [Monday to Thursday]	\$6.00/day
22	Peak - [Friday to Sunday] [EVE of PH, PH & School Holidays]	\$12.00/day

	FOR CORPORATE UNITS ONLY	CHARGES
23	Mahjong Set [inclusive of Table, Mahjong Tiles & 1 Pc Mahjong Paper]	\$10.00/day
24	BBQ PIT	\$12.00/day

Updated as at 20/02/2024

[Back to Directory ^](#)

Bungalow House Rules

Things that are not allowed to do inside and outside of the Bungalow



No Pets allowed



No Vandalism



No Gambling



No Drones



No PMDs & Segways



No Drugs



No sound system
or speaker



No durians allowed
inside the Bungalow unit



DO NOT throw hot charcoal
into the dustbin



Furnitures to be placed
at ORIGINAL position

**AFTER
11.30PM**

Occupants **MUST** maintain the peace and
serenity within and around the bungalow.

[Next >](#)

Bungalow House Rules

Please ensure not more than 20 persons in the bungalow unit at any point of time. Only a maximum of 8 persons to stay overnight. Excess occupant/s are to leave by 11pm.



Please sanitise your hand regularly. Hand sanitisers are available at the reception entrance and counters. All commonly-touched surfaces are also frequently disinfected daily.



If running a temperature. Please seek immediate medical attention and refrain from staying in the NSRCC premises.



Check-in will only open at 14:00 daily. Please get the necessary documents ready for our staff to check you in promptly.



Contact Housekeeping when you are ready for check out by 10.00 am. Once inventory check is completed, please proceed to Bungalow Reception.

CHECK OUT

Recreation Facilities

Billiard Room *(Dress code applies)*

6543 5709

10 am to 10 pm daily

Bungalow pass holders enjoy special rates.

Book personally at Main Lobby Reception.

Bowling Centre

6545 6365 /
2059

3 pm to 11 pm (Mon) – Opens at 12pm if Mon is a Public Holiday

12 pm to 11 pm (Tue to Thu)

12 pm to 1 am (Fri to Sat)

12 pm to 11 pm (Sun)

Last Booking – 1 hour before closing

Call to book lanes in advance.

Bungalow pass holders enjoy special rates.

Karaoke Rooms / Family Zone

6545 6365 /
2059

12 pm to 11 pm (Mon to Thu)

12 pm to 1 am (Fri)

10 am to 1 am (Sat)

10 am to 11 pm (Sun)

Last Booking – 1.5 hour before closing

Games Rooms

6545 6365 /
2059

12 pm to 10 pm (Mon to Thu)

12 pm to 12 am (Fri)

10 am to 12 am (Sat)

10 am to 10 pm (Sun)

Last booking – 2 hours before closing

*On Public Holidays and School Holidays,

Bowling Centre opens at 12.00pm.

Karaoke, Family Zone & Games Rooms opens earlier at 10.00am.

*On Eve of Public Holidays,

Bowling Centre, Karaoke, Family Zone & Games Rooms closes later at 1.00am.

[Next>](#)



Billiards Room



Karaoke Room



Bowling Centre



Family Zone

Sport Facilities

Fitness Centre

6543 5715

(Children below 12 years old are prohibited)

7.00am to 9.30pm (Weekdays)

7.00am to 8.30pm (Weekends & PH)

Only proper exercise attire is allowed.

12 to 14 years old are to be accompanied by an adult.

Free entry for bungalow pass holders.

Swimming Pool & Wet Playground

6543 5726

12.00pm to 8.30pm (Mon)

7.00am to 8.30pm (Tue to Sun & PH)

Please do not bring towels from your bungalow to the pool.

Kindly produce your bungalow pass or membership card for towels.

Squash Court

6543 5725

10.00am to 10.00pm daily

Only non-marking shoes are allowed.

Bungalow pass holders enjoy special rates.

Book personally at the Main Lobby Reception.

Tennis Court

6543 5725

7.00am to 10.00pm daily

Bungalow pass holders enjoy special rates.

Book personally at the Main Lobby Reception.

Multi-Purpose Court / Basketball Court

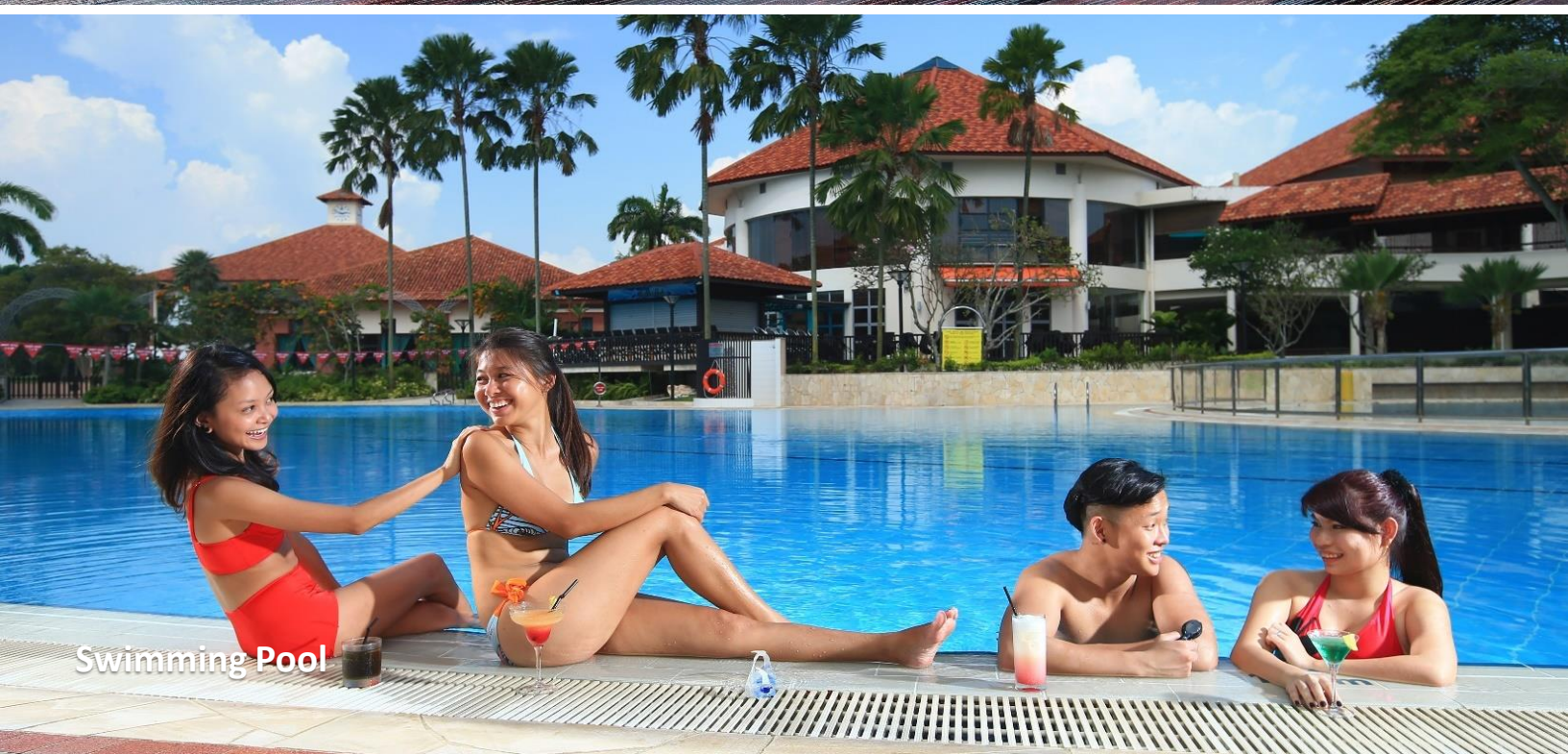
6543 5702 /
5703 / 5704

9.00am to 4.00pm daily

Please contact Bungalow Reception for booking.



Fitness Centre



Swimming Pool



Tennis Court

Club Facilities

Golf Pro Shop (*Located at The Golfers' Terrace*)

6543 2051

7 am to 7 pm (Mon to Sun)

Fruit Machine Room (*Open to members only*)

6543 5708

10 am to 11 pm (Daily)

12 pm to 11 pm (last Fri of the month)

Dress code applies.

Please present your membership card upon entry.

*The Jackpot Room will permanently cease operations with effect from 29 September 2023.

Sundry Shop

1 pm to 8 pm (Sat to Thu)

2 pm to 8 pm (Fri)

Food & Beverage Outlets

Passion Café (Golfers' Terrace)

6908 3944

7.00am to 8.30pm daily

Last orders at 8.00pm

A conducive eating place where you can savour a wide selection of Singapore's local delights while watching golfers tee-off.

Poolside Bistro @ NSRCC

6241 2254

11.00am to 10.00pm (Wed to Mon)

Closed on Thu, except PH & Eve of PH

Located in front of the Fitness Centre and overlooking the Swimming Pools, Poolside Bistro is managed by Jun Hang F&B - the same team behind Fairway Cafe @ NSRCC Kranji. Diners can expect to indulge in homely Teochew Cuisine, such as Teochew Bak Kut Teh and Teochew Fish Head Steamboat. Local and Western dishes, including Sambal BBQ Stingray and Grilled Chicken Chop, are also available!

Bistro Bowl Café

6543 2247

12.00pm to 9.30pm (Tue to Thu)

Last orders at 9.00pm

12.00pm to 10.00pm (Fri, Sat & Eve of Public Holidays)

Last orders at 9.30pm

10.30am to 9.30pm (Sun, Public Holidays & School Holidays)

Last orders at 9.00pm

Closed on Mon

This cosy cafe offers a full menu of tasty options for hungry bowlers. Indulge in local favourites such as Nasi Lemak, Hor Fun and Chicken Chop. If you're feeling a little peckish, go on and try their finger foods such as Chicken Nuggets and delectable sandwiches.

[Next >](#)





Food & Beverage Outlets

Fu Lin Men @ NSRCC

6592 4680

Lunch

11.30 am to 3 pm (Tue to Sun)

Last orders at 2.30 pm

Closed on Mon

Dinner

5.30 pm to 10 pm daily (Tue to Sun)

Last orders at 9.30 pm

Fu Lin Men @ NSRCC offers palatable Cantonese Cuisine ranging from everyone's favourite Dim Sum to luxurious dishes such as Peking Duck and Chilli Crab. A menu lined up with ample choices to whet your appetite awaits you!

Sky Bistro @ NSRCC

9221 8868

4 pm to 12.00 pm (Tue to Sun)

Closed on Mon

Located at the top floor of NSRCC Sky Range with its picturesque settings, Sky Bistro offers an extensive menu from light bites to full main courses with choices of Western and Asian fare. Members and guests can look forward to delicacies such as Jumbo Satay, "Sky Wings", Beef Burger Sliders and Hainanese Pork Chop.





Fu Lin Men @ NSRCC



Sky Bistro @ NSRCC

NSRCC Sea Sports Centre

Discover the NSRCC Sea Sports Centre, a place for unlimited fun and adventure for sailing enthusiasts and sea-loving folks. The facility provides opportunities for members to enjoy the sun, sea and surf through various sea sports activities, programmes and competitions.

Operated by Constant Wind Sea Sports and Sailing School, the sea sports centre features a sailing school offering courses for water sports, including windsurfing and sailing. Get the family together for some quality time in a unique Family Experiential Sail on a 5-person capacity Laser Bahia sailboat.

6445 5108

Stella

4 pm to 10.30 pm (Mon to Fri)

12 pm to 10.30 pm (Sat, Sun & PH)

6214 9168

Stella offer diners a romantic alfresco dining venue found only in few places on the island. Immerse yourself in the cool sea breeze while enjoying your cocktail, enticing western and local favourites they serve up just for you. Set against the backdrop of the Singapore Straits, diners get to enjoy a stunning sunset view. Do book ahead especially on weekends to snag the best seats on the boardwalk or under one of the shady Bali-style cabanas. Stella is perfect for that cosy wedding or marriage registration ceremony, gathering of family and friends, as well as corporate events.

This is the kind of "get-away" ambience not to be missed!

Zheng Zichar



12 pm to 8.30 pm (daily)

6214 9069

Zheng Zichar is the latest addition to our wide list of delectable dining options. Simple zi char concept, with a daily supply of fresh market fish, cooked accordingly to guest selection of cooking style. Located at NSRCC's Sea Sports Centre, patrons will be spoilt for choice with its broad range of zi char dishes, from seafood to meats and noodles to rice.

[Next >](#)



NSRCC Sea Sports Centre



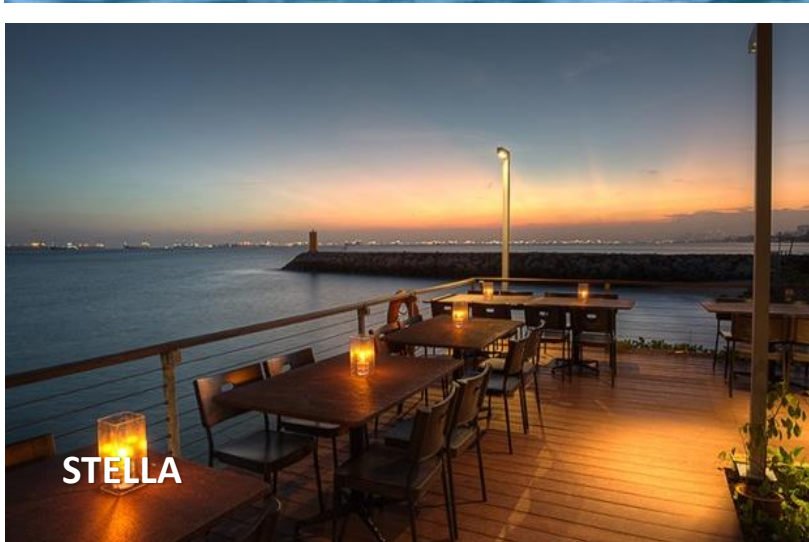
Stand Up Paddling



Windsurfing



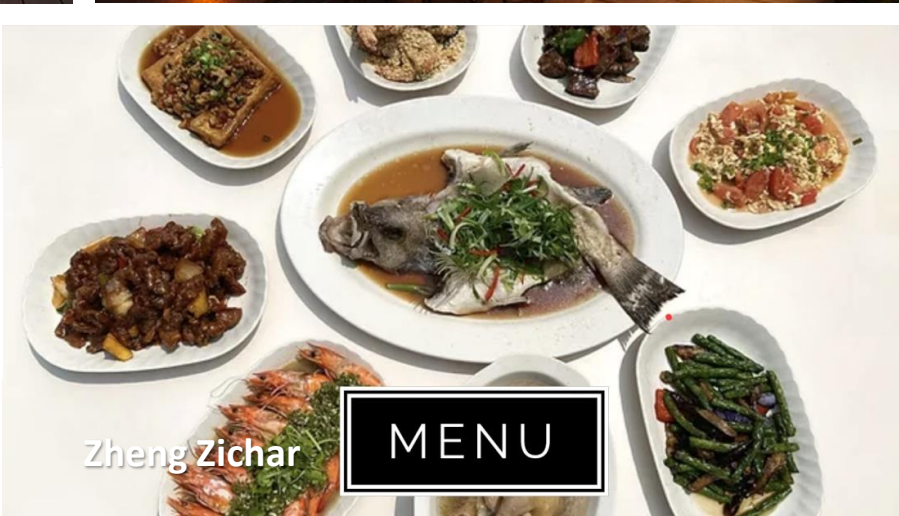
STELLA



STELLA



Zheng Zichar



Zheng Zichar

MENU

NSRCC Club Magazine

Our Resort View newsletter is now available in digital format on a monthly basis.

Read our latest club magazine <https://www.nsrcc.com.sg/club-magazine>



Happy reading!



[Back to Directory ^](#)

NSRCC SHUTTLE BUS SCHEDULE

WEEKDAYS, WEEKENDS & PUBLIC HOLIDAYS	
DEPARTURE TIMINGS	
From Tanah Merah MRT (Exit A)	From NSRCC Changi (Main Lobby)
0815*	0945
0845	1015
1000	1230
1030	1300
1100	1330
1215	1415
1245	1515
1315	1545
1345	1630
1430	1730*
1530	1800
1600	1830
1700	1915
1815	2015
1845	2045
1945	2145
2030	2310
2200	-

[*] For Weekends & Public Holidays only

Pick up point @ NSRCC [Main Lobby]

Pick up point @ TANAH MERAH [MRT EXIT A]

Please arrive at the pick-up point 5 mins before departure time

[Back to Directory ^](#)



NSRCC Facilities Directory

